

Technical Specification

Model		ERICA 30	ERICA 32	ERICA 43
Power		30W / 40W	60W / 80W / 100W	60 / 80 / 100 / 150 / 200W
Working Area	Cutting Area	736 mm x 457 mm (29 inch x 18 inch)	915 mm x 610 mm (36 inch x 24 inch)	1220 mm x 920 mm (48 inch x 36 inch)
	Engraving Area	666 mm x 457 mm (26.2 inch x 18 inch)	840 mm x 610 mm (33 inch x 24 inch)	1150 mm x 915 mm (45.2 inch x 36 inch)
Laser Source		Sealed Co2 Laser Tube (U.S.A.)		
Positioning Accuracy		0.02mm		
Drive		A.C Servo Control (Japan)		
Maximum Speed		80 IPS*		
Speed Control		Adjustable From 0.1 - 1000 mm/sec. (Up To 20 Colour Linked Speed Setting Per Job)		
Power Control		Adjustable From 1.0 - 100% (Up To 20 Colour Linked Speed Setting Per Job)		
Z Axis Movement		Automatic up to 180mm		
Resolution (DPI)		Up to 4000 DPI		
Support Formate		HPGL, DWG, CDR, PLT, DXF, BMP, JPG, AI, GIF, TIFF, PSD		
Cooling		Air Cooled (Except 150 & 200W), Operating Environment Temperature 15 -30 C (59 -86 F)		
Memory Buffer		256 MB		
Red Dot Pointer		Yes		
Computer Interface		USB - A For USB Storage, USB - B For Connection, Ethernet		
Display Panel		5 Inch Colorful LED Screen Showing Current File Name, Total Working, Laser Power, Engraving Speed		
Engraving Capability		256 Level Gray Scale Image Processing Capability		
Computer Systems		Win 8/10 , 32/64 Bit		
Pass Through Doors		Yes		
Virtual Printer Driver		Support Corel Drew Direct Out Put		
Safety		Class II 3R For Red Pointer Class I Laser Product Compliant with EN60825 Class 4 Laser Product Compliant with CDRH with the optional pass-through door module		
Fume Extraction Systems		External exhaust system with minimum flow rate 1200m3/h (CFM 706 ft3/h). Connection output 4" Diameter		
Power consumption		1100W	2500W	2500W
Operating Voltage		220-230 AC, 50/60 Hz		
Machine Dimensions (W x L x H)		1300 x 1081 x 1070 mm (51.18 x 43 x 42.12 inch)	1486 x 1241 x 1045 mm (58.50 x 48.85 x 41.14 inch)	1825 x 1510 x 1150 mm (71.85 x 59.44 x 45.27 inch)
Weight		342 kg	385 kg	405 kg

Specifications are liable to change without prior notice. All trademarks mentioned are property of their respective owners. *Speed Does not equal to throughput

For Immediate Assistance, Contact on **092279 85717, 092276 78044**



MEHTA CAD CAM SYSTEMS PVT LTD

Head Office & Manufacturing Facility

Plot No. 3, Road No. 1, Kathwada GIDC,
Ahmedabad 382 430, Gujarat, India.

Contact:

Tel.: +91-79-26840551, 26840552, 26840553
Fax.: +91-79-26840554



www.mehtaindia.com



mktg@mehtaindia.com

dun & bradstreet



POWERED BY

SYNRAD

Synrad Metal Laser Tube
(U.S.A.)

MEHTA
LASER

2nd GENERATION
MACHINE

**INDUSTRIAL
LASER ENGRAVER
ERICA SERIES**



Features

- AC Servo Motor Technology (Japan) for high speed and high precise movement control
- Pass-through front and rear doors to accommodate long working pieces
- Red beam dot pointer to help to see the expected laser beam position for cutting and engraving
- Processing file path in display while running the machine
- Smart light module at working table area
- Virtual printer driver functions
- USB flash Drive supporting read file directly from USB Flash Drive, you can work even without PC
- Power brake function: to resume work in case of power off
- Speed 80 IPS*



Synrad's Original "All-Metal" Tube Technology

The latest Vi Series lasers - for 30W and 40W.

Ultra Compact next generation Co2 laser tube cut a wide variety of material with incredible accuracy. No consumable parts and long operating lifetime performance, Synrad is the only CO2 laser manufacturer that can boast of proven operating lifetimes in excess of 45,000 hours (at which time, a simple and inexpensive gas refill returns the laser to full operation). The New Vi Series includes a new Temperature Broadcast feature for real-time condition monitoring and the design efficiently manages thermal resistance and power to deliver a stable accurate beam. The Vi Series are some of the most compact and lightest 30W and 40W CO₂ lasers.



The latest firestar Ti-series - for 60W, 80W and 100W.

Maximum power and performance from an air-cooled CO₂ laser is the drive behind their firestar Ti series technology. Synrad's firestar Ti series lasers are built on technology using a patented hybrid unstable resonator design.

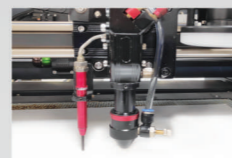
AC Servo Motor (Japan)

The new servo amplifier and servo motors combining proven reliability with 2.0 kHz high frequency response and energy saving design. The AC servo motor consider very stable, smooth operation, very less maintenance compared to DC servo motor.



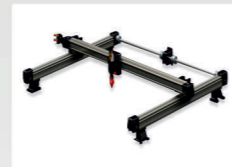
Auto Focus

The auto focus tools helps to adjust and fix focal length by automatic table up and down. It saves the time of setting the right distance (focal length) between head and top surface of the materials when you work with more materials having different thickness. Right focal length is the most important to get good quality engraving.



X, Y, Rails

- The linear guideway body consists of an anodized aluminum housing with a chrome steel gcr15 shaft which is of low friction, noise and vibration. The pulleys/pinion is equipped with maintenance free U shape bearings.
- It redefine the classic belt drive, putting belts to work in an entirely new way that reduces the positioning errors and speed limitations of conventional belt drives.
- Mehta's linear modules provides high load capacities, high speed, accuracy and repeatability. The linear bearing system is corrosion resistant, even after scratching.



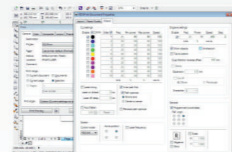
Controller

ERICA's latest laser engraving & cutting control system has better stable hardware with antistatic, resistance to high pressure. Based on 5-inch colorful screen, human-machine operation system, with better operation interface and stronger functions, excellent motion control functions, high-capacity file memory, with strong compatible 2-way independent adjustable laser power control interface, strong compatible U disk drive program, multiple ways general/dedicated IO control.



User Friendly Driver Interface

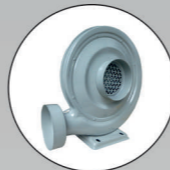
Virtual Printer Mode, File Send Direct From CorelDRAW



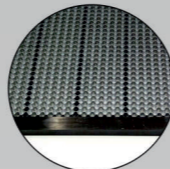
Standard Accessories



Air Compressors System



Air Extraction System



Honeycomb Table

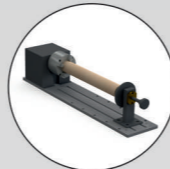
Optional



Fume Extractor



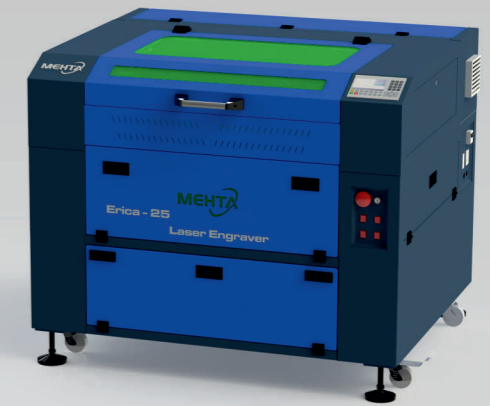
CCD Camera



Rotary Attachment

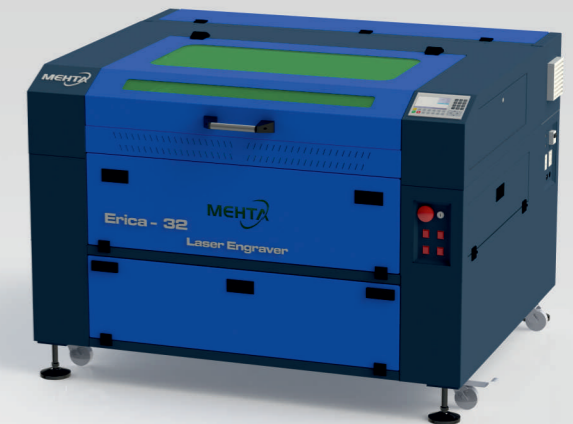
Erica 30

Working Area : 736 mm x 457 mm
(29 inch x 18 inch)
Power : 30W / 40W



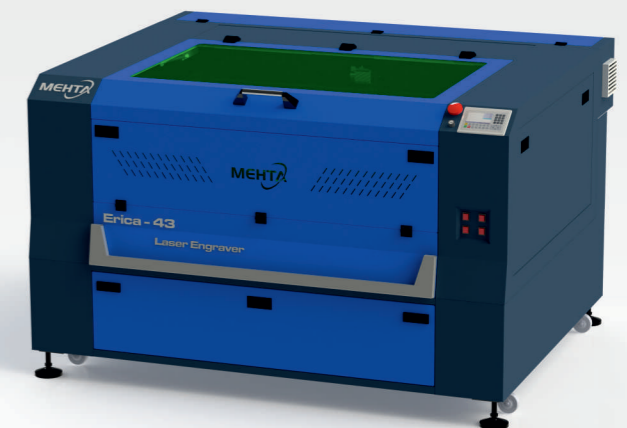
Erica 32

Working Area : 915 mm x 610 mm
(36 inch x 24 inch)
Power : 60W / 80W / 100W



Erica 43

Working Area : 1220 mm x 920 mm
(48 inch x 36 inch)
Power : 60W / 80W / 100W / 150W



Leather



Fabric



Paper



Wood



Acrylic Engraving



ABS Label



Leather Label



Acrylic Cutting



MDF