

Multilayer Printing To Build Layers

4th Layer

The Color Layer First Caught In Eyes

3rd Layer

White Layer That Brightens The Color Ink

2nd Layer

Black Layer That Shades The Floating Color Ink

1st Layer

The Color Layer That Emerges When Lighting



BLAZE

3.2 MTR. UV ROLL TO ROLL INKJET PRINTER WITH PINCH ROLL SYSTEM

BLAZE, RR 3200UVK
WITH **KONICA 1024i 13pl** PRINTHEAD



Back Light OFF



Back Light ON

Low Cost UV Ink Optional White-ink Printing, With Stirring System

- **KONICA 1024i** HIGH SPEED JAPANESE PRINT HEAD
- **PANASONIC A6** 400W SERVO MOTOR
- **ENERGY SAVING TECHNOLOGY:** DUAL WATER COOLING WITH LED UV LAMP
- **DUAL AIR SHAFT & DUAL DANCER BARS** FOR STEADY & ACCURATE MEDIA DELIVERY
- OPTION OF 'WHITE INK' PRINTING
- **NEGATIVE PRESSURE SYSTEM**

5 Layers Printing,

double sided application

[color] + [white] + [black] + [white] + [color]

3D stereo image, new application for windows stickers, can print different design pattern on both sides.



Double ads on one media. Light, tight, non-overlapping

- High Efficient UV-LED Technology.
- Four Layers Printing, Exquisite and Vivid Color Output.
- International Environmental Standard UV Inks.
- Odorless, Less Environmental Impact.
- Optional Eight-color Print Mode (CMYK-LC-LM-LK-W).
- Superior Image Quality on A Wide Array of Media with UV Ink.

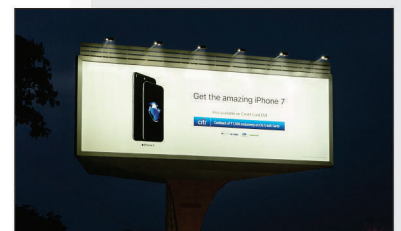
56.4
sq.mtr./hr

MAX
3200mm



Specification

| Model | RR 3204UVK | RR 3208UVK |
|--|---|------------------------------|
| Print Head | 4 x Konica 1024i Print Heads | 8 x Konica 1024i Print Heads |
| Head Config. | 1 x CMYK | 2 x CMYK |
| Head Config. (Optional) | 1 x CMYK + W | - |
| Curing System | LED UV Curing System | |
| Ink | UV Curable Ink | |
| Colors | Standard: KCMY, Optional: W | |
| Ink Supply System | Negative Pressure System + White Ink Stirring System | |
| Cleaning System | Positive Purging System | |
| Servo System | Panasonic A6 400W Servo System | |
| Media System | 2 Air Shafts + 2 Dancer Bars + Pinch Rollers | |
| Media Type | Backlit, Banner, Canvas, Backlit Film, Reflective Film, Backlit Textile, Vinyl, Wall Covering, PET. | |
| Media Width | Max. 3200mm | |
| Printing Width | Max. 3200mm | |
| Data Interface | External: USB 2.0, Internal: SCSI Cable | |
| Working Environment | Temperature: 20°C~28°C, Humidity: 40%~70% | |
| Software | Onyx RIP | |
| Image Format | Bitmap, TIF, Quark Xpress, JPEG, EPS, PDF | |
| Power | Single-Phase, 50/60Hz, AC220V ±10%, 10A, Regulator: 10kVA | |
| Dimension (LxBxH) | 4940 x 1159 x 1527 mm | |
| Weight | 1600kg | |
| Specification are liable to change without prior notice. All trademarks mentioned are property of their respective owners. | | |



Printing Speed

| Konica 1024i | Resolution | RR 3204UVK | RR 3208UVK |
|--------------|-------------|-------------------------|-------------------------|
| Production | 720x1080dpi | 28.2m ² /hr. | 56.4m ² /hr. |
| Quality | 720x1440dpi | 18.7m ² /hr. | 37.4m ² /hr. |

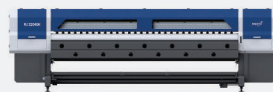
Our other range of products



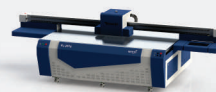
UV Roll to Roll Printer with Gen5 Printhead



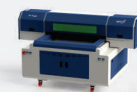
UV Roll to Roll Printer with Kyocera Printhead



Solvent Inkjet Printer with Seiko Printhead



UV Flatbed Printers RJ 2513 / RJ 2030



UV Flatbed Printer RJ 7500



UV Flatbed Printer RJ 1016



MADE IN INDIA, A PRODUCT BY MEHTA

Manufactured & Marketed by:
MEHTA CAD CAM SYSTEMS PVT. LTD.

Head Office & Manufacturing Industry
Plot No. 3, Road No. 1, Kathwada GIDC,
Ahmedabad, 382 430, Gujarat. INDIA

Contact:
Tel.: +91-792970 0235 / 7575009626
Fax.: +91-7926840554



dun & bradstreet

For Immediate Assistance, **Contact 092276 78041, 092276 78044**



mktg@mehtaindia.com



www.mehtaindia.com

DELHI | MUMBAI | CHENNAI | KOLKATA | BANGALORE | HYDERABAD | JAIPUR | RAIPUR | INDORE | LUDHIANA | CHANDIGARH | PUNE | NAGPUR | PATNA | LUCKNOW | SURAT | RAJKOT | RANCHI | BHUBANESHWAR | GUWAHATI | HUBLI | VIJAYWADA | COIMBATORE | COCHIN | AGRA | GOA