

GZM 3202SG / 3204SG



Introducing
SPECTRA
Starfire Print Head

Main Features

Extreme speed upto 248m²/hr

Revolutionary cleanable print heads.

Reliable Negative Pressure System.

Enhanced drying System.

Multiple rolls feeding system.

Optional auxiliary taking up unit.

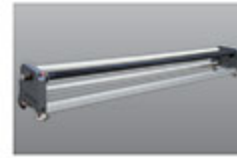




StarFire1024 Print Heads
Revolutionary cleanable print heads with integrated ink loop unit and changeable nozzle plate.



CNC aluminium beam and dual linear guide enable high speed printing and long service life.



Optional auxiliary taking up unit is capable to collect a roll of printing with maximum 420mm in diameter.



Negative pressure system with dual SMC indicators and two groups of ink buffers, ensures smooth and stable Ink supply.



Self-developed thermal drying system can dry the printing more efficiently with lower power consumption.



Advanced feeding system supports upto three rolls of media. Adjustable pressure bar is suitable for various type of Media.

ITEM	SPECIFICATION	
Model	GZM3202SG	GZM3204SG
Print Head	2 Dimatix Starfire 1024	4 Dimatix Starfire 1024
Ink	CMYK solvent ink/eco solvent ink	
Ink Supply System	Negative pressure system with ink recycle system	
Media Type	Banner, PP, Vinyl, Film....	
Feeding System	Multiple rolls feeding system	
Drying System	Pre, mid, post, extended heater and self-developed thermal drying system	
Printing Speed	Production : 124 m ² /hr Standard : 89 m ² /hr Quality : 69 m ² /hr	Production : 248 m ² /hr Standard : 178 m ² /hr Quality : 138 m ² /hr
Data Interface	USB 2.0	
Working Environment	Temp. 23°C ~29°C, Humidity: 50%~80%	
Software	Photoprint 10.0 + GZ Control Console	
Power	50Hz/AC, 220V±10% 15A(printer) + 15Ax2 (thermal drying system)	
Dimension	L x W x H (mm): 4800 x 1000 x 1500	

Specification are liable to change without prior notice. All trademarks mentioned are property of their respective owners.



Authorised Distributor
MEHTA CAD CAM SYSTEMS PVT. LTD.
Head Office: 4 & 5, 2nd Floor, Sumel Complex,
Opp. GNFC Info Tower, Sarkhej Gandhinagar Road,
Ahmedabad-380 059. INDIA.
Contact:
Tel.: +91-79-26840551 / 26840552 / 26840553
Fax: +91-79-26840554

For Immediate Assistance, Contact on **092276 78044, 092276 78041**

sales@mehtaindia.com

www.mehtaindia.com

DELHI | MUMBAI | CHENNAI | BANGALORE | KOLKATA | HYDERABAD | RAIPUR | JAIPUR | INDORE | GUWAHATI | PATNA | CHANDIGARH | LUCKNOW | PUNE | BHUBANESHWAR | JAMMU