

**TECHNICAL SPECIFICATION**

Model	RK 2513	RK 2513 FR	RK 3220
Printing Technology	Piezoelectric on-demand inkjet technology with grayscale capability		
No. of Printheads	3 Kyocera Print Heads (Standard) Up to 6 Print Heads (optional)		
Printable Media Size Flatbed	2500mm x 1300mm	2500mm x 1300mm	3200mm x 2000mm
Printable Media Size Roll to Roll	-	2500mm width	-
Printing Resolution	1200 dpi		
Acceptable Media Thickness	Up to 100mm		
Ink type	UV LED curable ink		
Ink Capacity	1.5 Liter Bottle		
Colours	Cyan, Magenta, Yellow, Black, White		
Configuration	(1) CMYK + White, (2) White + CMYK, (3) CMYK + White + CMYK		
Ink Curing Unit	Dual LED Lamps		
Software	Onyx RIP Center		
Interface	Highspeed USB 3.0		
Power Supply	100-110V AC / 220-240V AC, 50/60Hz		
Required Power Capacity	For Printer Operation (15A) max, + For Vacuum Platform (15A) max		
Power Consumption	Maximum 6.8kVA		
Dimensions (mm)	L 2228 x W 4310 x H 1432	L 2800 x W 4350 x H 1600	L 2776 x W 5000 x H 1366
Weight	1150kg approx	1400kg approx	1600kg approx
Working Environment	(Power on) Temperature: 21°C to 30°C (69° to 86°F)/ Humidity: 35 to 80% (Power off) Temperature: 5°C to 40°C (41° to 104°F)/ Humidity: 20 to 80%		

Specification are liable to change without prior notice. All trademarks mentioned are property of their respective owners.

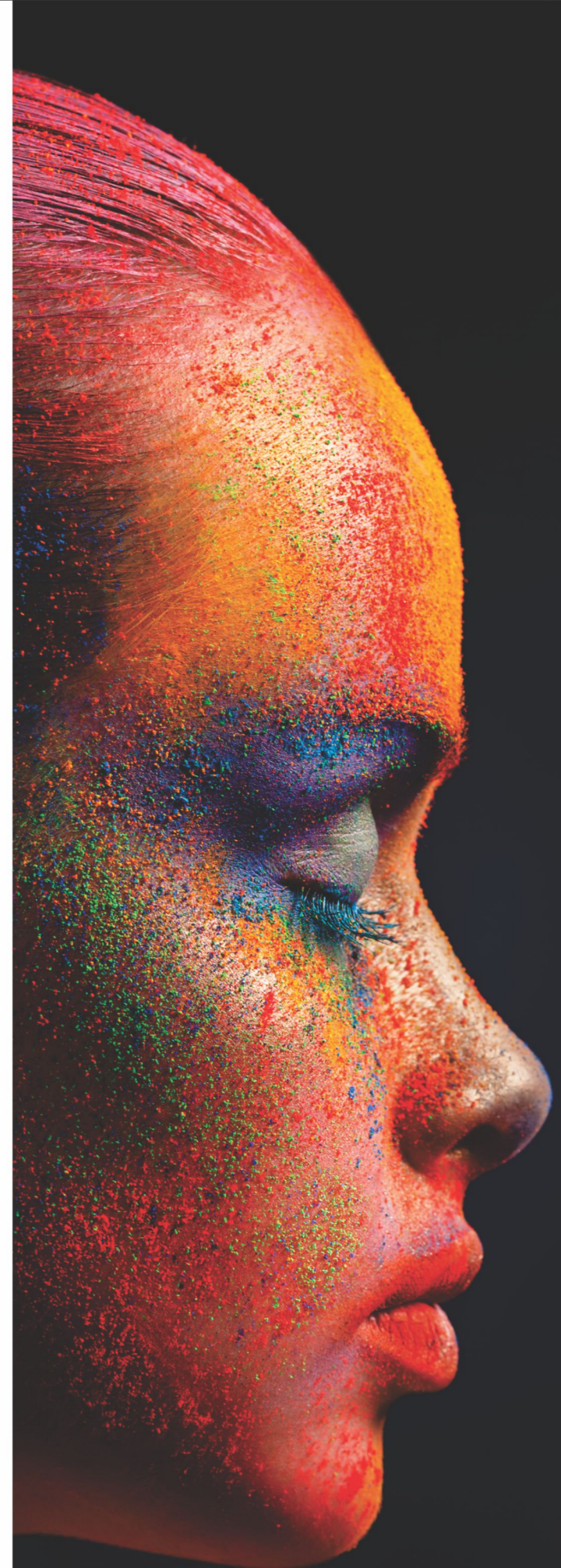
**OUR OTHER RANGE OF PRODUCTS**

 <p>Solvent Printer with 6 Seiko Printhead Speed : 3540 sq.ft./hr.</p> <p><b>CROWN</b></p>	 <p>Solvent Printer with 2 Seiko Printhead Speed : 2360 sq.ft./hr.</p> <p><b>PRINCE</b></p>	 <p>ECO Solvent Printer with Epson i3200 Printhead, Speed : 352 sq.ft./hr.</p> <p><b>BRUNO</b></p>	 <p>ECO Solvent Printer with Epson i3200 Printhead, Speed : 352 sq.ft./hr.</p> <p><b>UNO</b></p>
 <p>UV Roll to Roll Printer with Seiko 1024HG, 13pl Printhead</p> <p><b>BLAZE</b></p>	 <p>UV Roll to Roll Printer with Kyocera Printhead</p> <p><b>ENZO-32</b></p>	 <p>UV Flatbed Printer With Inbuilt Rotary With Epson i3200 Printheads</p> <p><b>EMICO</b></p>	 <p>UV Flatbed Printer With Ricoh GH2220 Printheads</p> <p><b>RASTERJET</b></p>

**RasterJet™** + **KYOCERA**  
Mehta's Strategic Partnership  
with Kyocera for UV Printers in India.

**THE  
BETTER**

UV FLATBED & HYBRID INKJET PRINTER  
Equipped with **KYOCERA** Printheads



Manufactured & Marketed by:  
**MEHTA HITECH INDUSTRIES LTD.**  
(FORMERLY KNOWN AS MEHTA CAD CAM SYSTEMS PVT. LTD.)

Head Office & Manufacturing Facilities  
Plot No. 3, Road No. 1, Kathwada GIDC,  
Ahmedabad, 382 430, Gujarat. INDIA

Contact:  
Tel.: +91-792970 0235 / 7575009626  
Fax.: +91-7926840554



dun & bradstreet



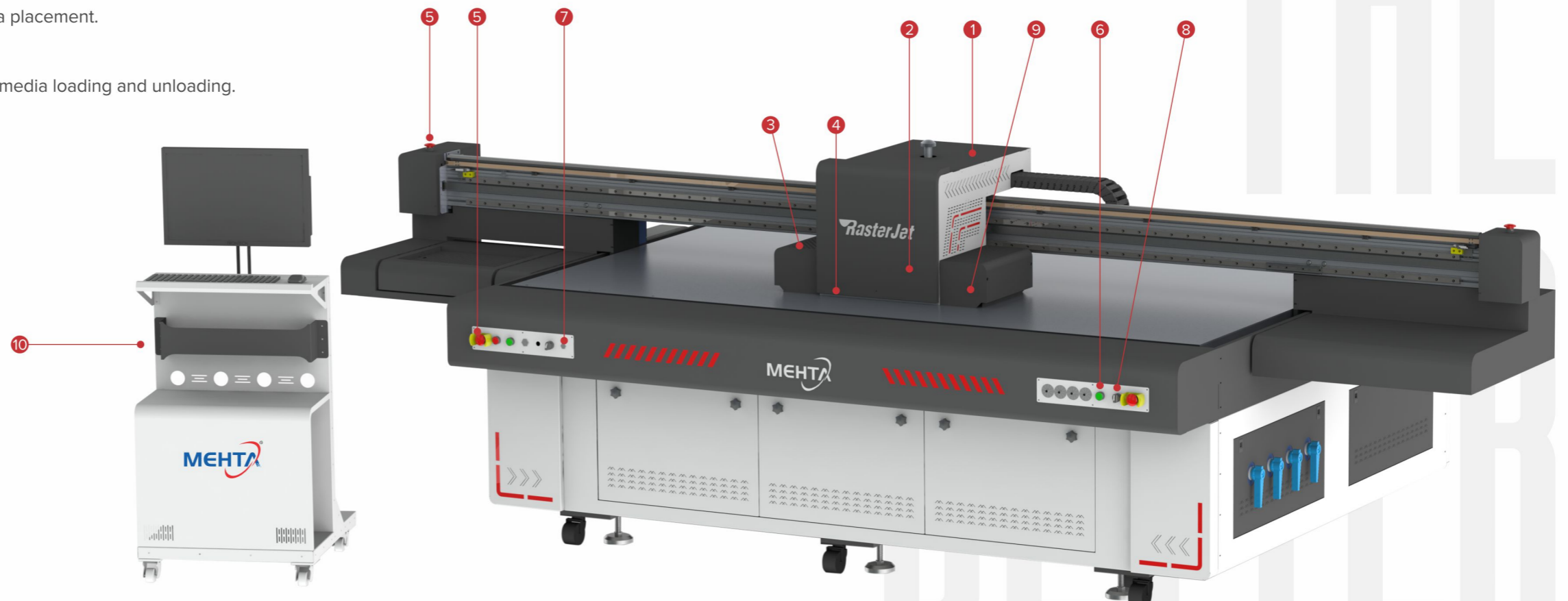
For Immediate Assistance, Contact 075750 09639, 092276 78044 | [mktg@mehtaindia.com](mailto:mktg@mehtaindia.com) | [www.mehtaindia.com](http://www.mehtaindia.com)

DELHI | MUMBAI | CHENNAI | KOLKATA | BANGALORE | HYDERABAD | JAIPUR | RAIPUR | INDORE | LUDHIANA | CHANDIGARH | PUNE | NAGPUR  
PATNA | LUCKNOW | SURAT | RAJKOT | RANCHI | BHUBANESHWAR | GUWAHATI | HUBLI | VIJAYWADA | COIMBATORE | COCHIN | AGRA | GOA

- 1 **Automatic Negative Pressure System**  
Using PCB board to control and set the negative pressure.
- 2 **Kyocera Print Heads (each head has 2 ink channels)**  
Featuring variable dots, true grayscale imaging 4, 6, and 10pl.
- 3 **UV-Curing LED**  
Instant on/off of lamps during printing for fast production.  
Variable output power control.
- 4 **Auto Height Detection System**  
Automatically detects height of media up to 100mm thickness and sets print head distance from media automatically.
- 5 **Emergency Stop Switches**  
Operation from any corner of the printer.
- 6 **Power on/off for Vacuum**  
Push button for operating vacuum table.
- 7 **Peg Bar System**  
Pin registration for accurate and consistent rigid media placement.
- 8 **Reversible Vacuum Valve (optional)**  
Reverse the air from vacuum to blow for easier heavy media loading and unloading.
- 9 **Static Suppression (optional)**  
Standard static suppression kit that helps to eliminate static on the substrate.
- 10 **Computer Stand**  
Movable Computer Stand for easy printing operation.  
(Computer system not included with printer).

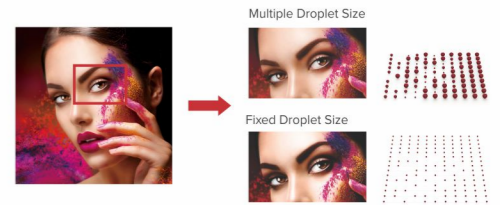
**Kyocera KJ4A printhead**

Nozzle Quantity: 2656  
Physical Resolution: 2\*300dpi  
Ink drop Size: Variable 4-6-10pl  
Max Operating Frequency: 30Khz  
Effective Print Width: 112.35mm



**Variable Dot Technology**

Variable Dot Technology enables the printer to print in 3 different dot sizes (small, medium and large) to create high quality images with smooth gradations. Variable Dot Printing uses smaller drops to produce smoother gradations and bigger drops create uniform solids. By producing dots in three different sizes, smooth high resolution graphics are created without a grainy appearance, even at high speed and in low resolution mode, high quality printing is possible.



**Double Negative Pressure System**

Separately control the negative pressure value of white ink and color inks, as individual viscosity and gravity with each other. It can ensure a smooth printing process and outstanding printing effect. The pressure value can be checked and adjusted according to production environment.

**Reversible Printing Function & Repeat Printing Mode**

Both reversible and repeat printing mode enables a higher efficiency in production.

**Top Printing Speed: Up to 640 sq.ft / hr (Rk2513)**

Engineered for high-quality printing.  
(RK 2513 Kyocera with double rows)

**RK 2513**

2500 mm x 1300 mm

**RK 3220**

3200 mm x 2000 mm

Also Available with **Roll to Roll Attachment**

High Speed, High Resolution, Unbeatable UV Flatbed Printer:  
RasterJet RK 2513, with Kyocera Printheads

**By India's Leading Manufacturer of Digital Printers**

**SPEED UPTO 640 SQ.FT./HR.**

equipped with ONYX RIP Software | Magnetic Motor